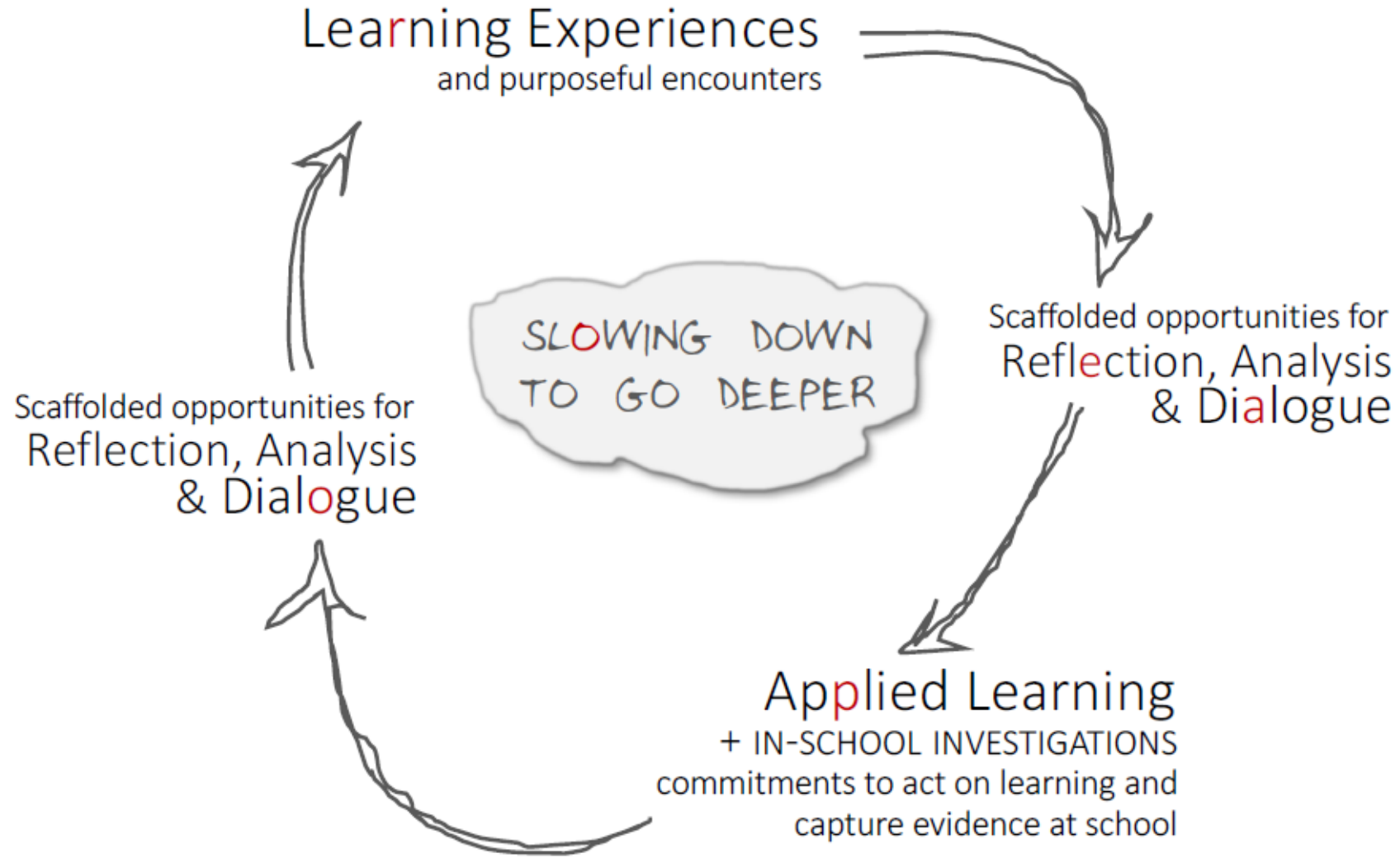


PRIMARY MATHEMATICS AND SCIENCE SPECIALISTS

Applied Learning &
Victorian Teaching and Learning Model





The Victorian Teaching and Learning Model

The **Framework for Improving Student Outcomes (FISO)** helps schools lift student outcomes and build system capability



Vision for Learning

All students are empowered to learn and achieve, experiencing high quality teaching practice and the best conditions for learning which equip them with the knowledge, skills and dispositions for lifelong learning and shaping the world around them

Pedagogical Model



pedagogies which make the difference in improving student achievement and motivation

What have we been learning in these past 3 days that will help me create the conditions **in my own classroom** in which I can address the VTLM Vision for Learning?

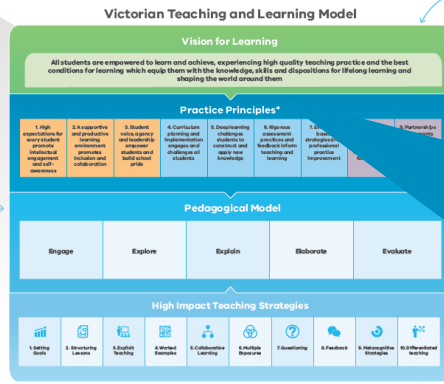
The **Pedagogical Model** describes what effective teaching looks like in the classroom and helps teachers apply the Practice Principles

The **High Impact Teaching Strategies (HITS)** are ten instructional practices that reliably increase student learning wherever they are applied

The Framework for Improving Student Outcomes (FISO) helps schools lift student outcomes and build system capability



The Pedagogical Model describes what effective teaching looks like in the classroom and helps teachers apply the Practice Principles



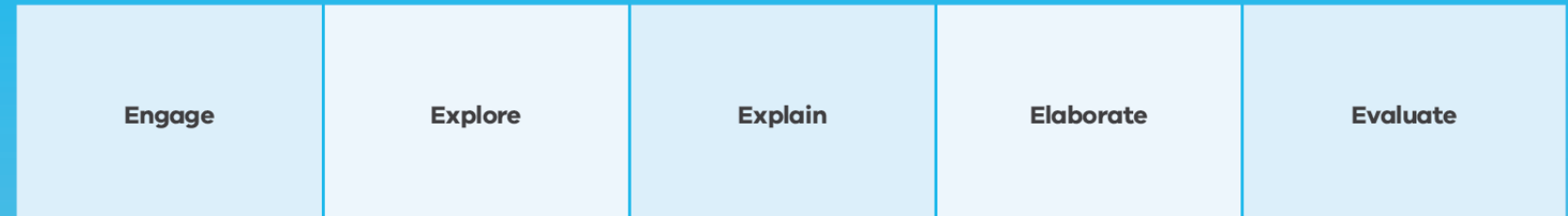
A Vision for Learning helps create a unified set of values and beliefs to drive a high performance learning culture

The Practice

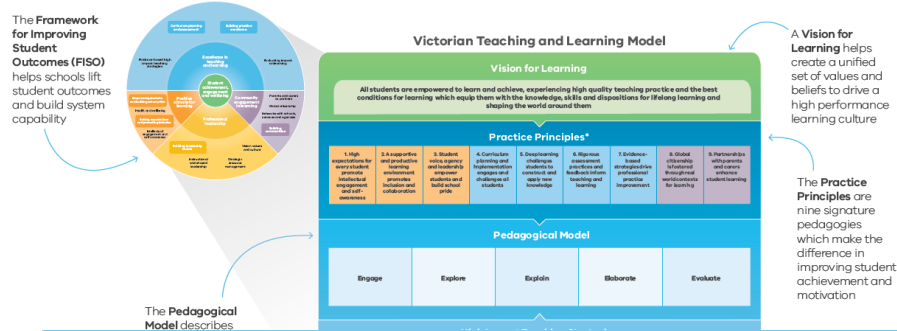
Practice Principles*

1. High expectations for every student promote intellectual engagement and self-awareness
2. A supportive and productive learning environment promotes inclusion and collaboration
3. Student voice, agency and leadership empower students and build school pride
4. Curriculum planning and implementation engages and challenges all students
5. Deep learning challenges students to construct and apply new knowledge
6. Rigorous assessment practices and feedback inform teaching and learning
7. Evidence-based strategies drive professional practice improvement
8. Global citizenship is fostered through real world contexts for learning
9. Partnerships with parents and carers enhance student learning

Pedagogical Model



What connections can I see between what we've been learning and the Practice Principles and the Pedagogical Model?



What about the HITS...

High Impact Teaching Strategies



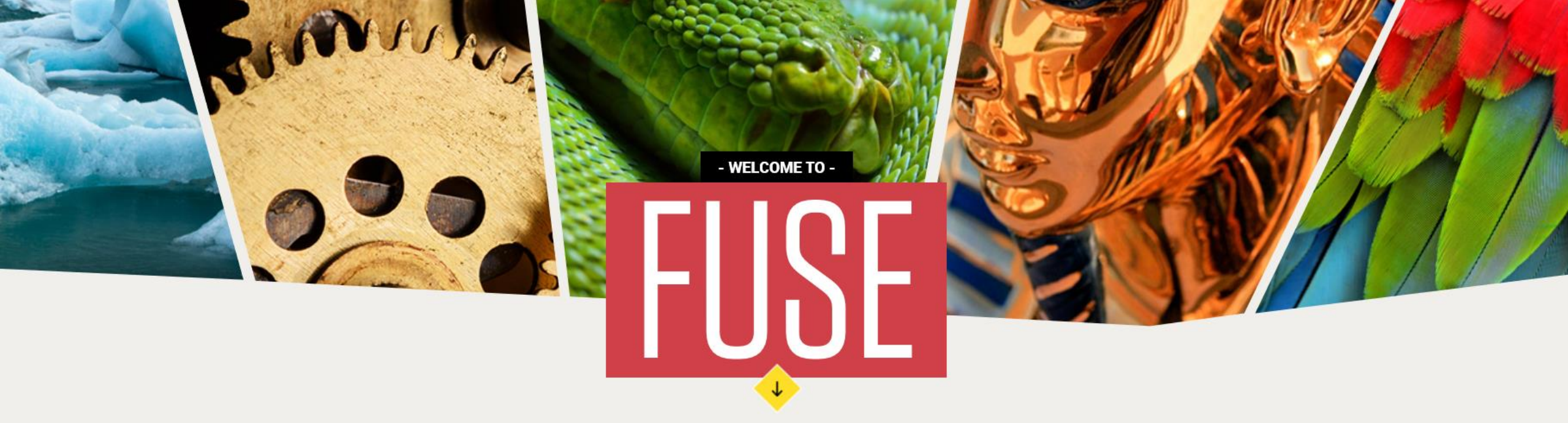
Where have you noticed the emphasis has been in the learning experiences over the past three days?

3 Strong Connections

- i. Individually, jot down 3 strong connections between your learning in this professional learning block and the VTLM – ***connections that stand out to you personally.***
Write each one on a post-it note.
- ii. With someone else in your cluster, place your post-it notes onto one of the large VTLM posters and discuss why they were your strongest connections.
- iii. Wall Talk

<https://www.surveymonkey.com/r/PMSSBlock1>





<https://fuse.education.vic.gov.au/pages/pmsscohort5>

See you all
back here on
29 April

