

Disability Inclusion Implementation: Practice Profiles





*I acknowledge the
Traditional Custodians of
the land on which we meet
and pay my respects to
their Elders past and
present.*



Disability Inclusion



Agenda:

- **Overview of the Disability Inclusion Reform**
- **Practice Profiles**
 - Purpose
 - How to book
 - What to do afterwards
- **Contact details**
- **Supports and PL available**

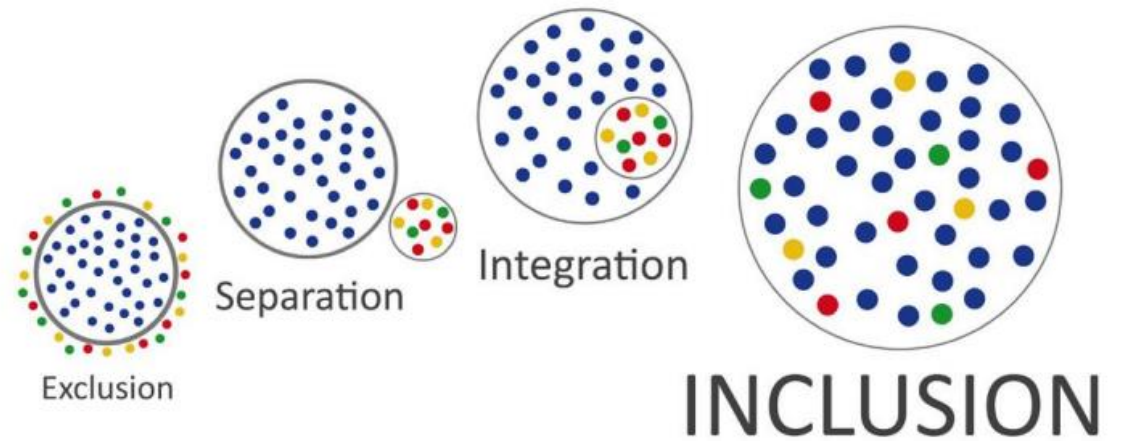


Disability Inclusion Reform Overview

Inclusive education



Inclusive education means that all members of every school community are valued and supported to fully participate, learn, develop and succeed within an inclusive school culture.



Principles for inclusive practice

Principle 1

Focus on inclusive practice at whole-of-school and in-class level

Principle 2

Value specialist expertise

Principle 3

Set a strong inclusive school culture through strong leadership

Principle 4

Collaborate and engage parents



Key Components of Disability Inclusion



A new Disability Inclusion Profile

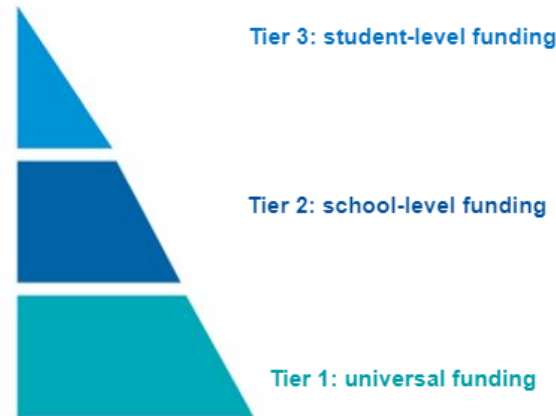


Figure 1: Disability Inclusion tiered funding model

A new tiered funding model



Investment in building skills and knowledge in inclusive education



Investment in implementation and disability support roles in regions



Disability Inclusion Profile Practice Session

Practice Profiles for schools: Purpose

Support transition from PSD to DI

Build understanding of request process

Build understanding of how a Profile meeting is conducted

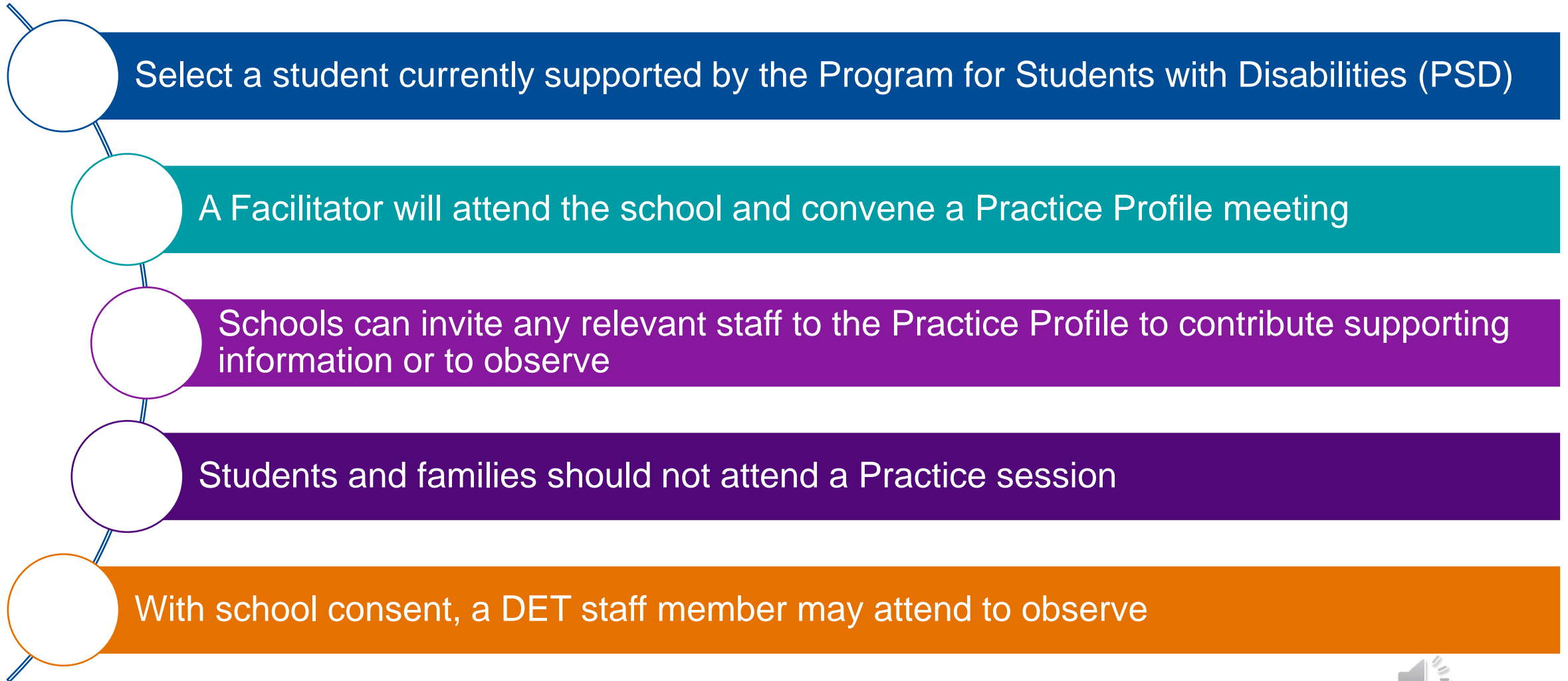
Reflect on school processes and documentation before undertaking an actual Profile

Important!

The practice session is **not** to prepare for a specific student's future Profile.



Practice Profile: A Case Study



How to request a Practice Profile



Disability Inclusion Facilitator Service

The Department of Education and Training Victoria (the Department) has established the Disability Inclusion Facilitator Service (DIFS) as part of Victoria's Disability Inclusion reforms. DIFS will work with the Department to rollout the Disability Inclusion Profile in Victorian government schools.

[Submit Profile Request](#)

Email : contact@difs.com.au | Phone : 1800 951 430

<https://www.difs.com.au/>

1800 951 430

Click!



i Use this form to request a new Disability Inclusion Profile for an individual student. You must be authorised on behalf of the school to submit this request. Following review by our team, you will be emailed a link to complete the Profile Request Screening Questions. To proceed with your request, please provide the following information.

Disability Inclusion Profile Practice Session

Schools have been offered the opportunity to register for a Disability Inclusion Profile practice session. If you wish to proceed with a practice session, please indicate by checking this box and completing the details below for an existing PSD funded student. If you are requesting a standard (non-practice session) Profile, please proceed to the Student Information section.

I am requesting a Disability Inclusion Profile practice session

Click!

Student Information

Surname

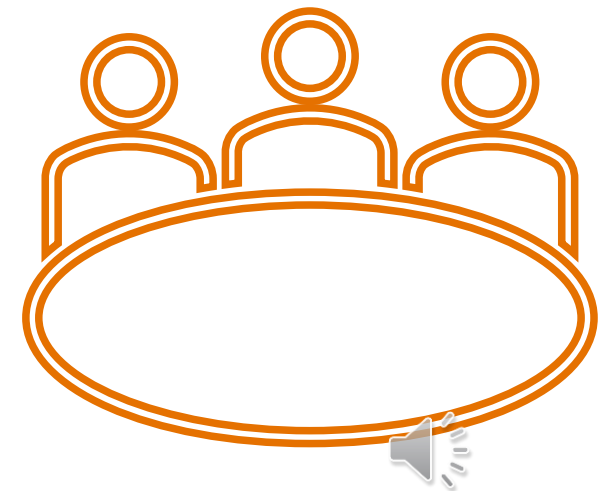
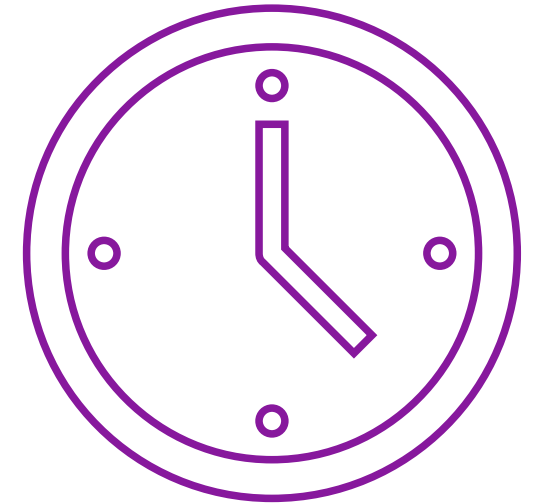
First Name

Once basic information has been submitted, DIFS will review and send an email link to request the IEP be uploaded and a basic information form to be completed and returned.



Time Commitment

- Preparation time (scheduling and uploading information): **30 minutes**
- Meeting Time: approximately **90 minutes**
- Schedule the relevant staff to attend the practice session, including the case study student's **teacher or teachers** for the full duration of the meeting.
- Tier 2 funding can be used to cover CRT for teachers attending practice sessions



After a Practice Session



Make time to meet as a team to reflect.



Contact the Regional Implementation Team to provide feedback on your experience of the Practice Profile, and for any support you may need moving forward.



The Regional Implementation Team (RIT)

Team Member	Role
Etty Rosenblum	Manager, Disability Inclusion Implementation - SEVR
Zoe Grealy	Manager, Disability Inclusion Implementation - SEVR
Jane Betteley	Disability Inclusion Senior Implementation Officer
Steph Rogers	Disability Inclusion Senior Implementation Officer
Cecilia Morales	Disability Inclusion Senior Implementation Officer
Lisa Innes	Disability Inclusion Senior Implementation Officer
Nisha Spence	Disability Inclusion Senior Implementation Officer
Cath Biggs	Disability Inclusion Senior Implementation Officer



Supports & Resources for schools

Learning Difficulties information Guides can be found [here](#)



SEVR Regional Implementation Team
DI Professional Learning on

[Arc](#)



Disability Inclusion eLearning modules
Search Disability Inclusion in LearnEd



[NCCD DET Policy](#)

[Disability Inclusion and NCCD Factsheet](#)

IEP Professional Learning Opportunities
via eLearn and Arc

[Arc](#)



[Courses](#) focus on the understanding, assessment and classroom support of students with diverse learning needs.



Thank you

**You can email the team at:
sevr.disability.inclusion@education.vic.gov.au**